



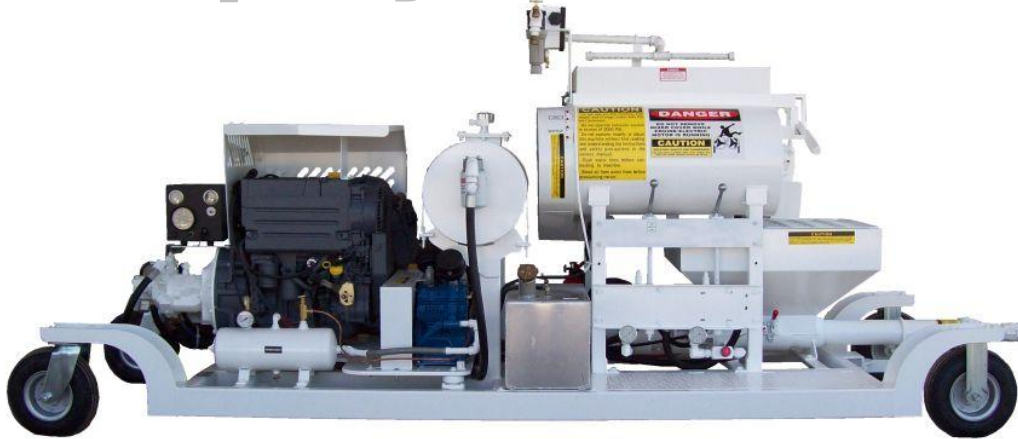
*There is a difference in mixing and pumping equipment.*

*"We Prove It Everyday"*

**STRONG MANUFACTURING COMPANY, INC. HAS BEEN PRODUCING QUALITY LONG LASTING EQUIPMENT SINCE 1964 FOR ROOF DECKS, UNDERLAYMENT, GROUTING, FIRE PROOFING, MANHOLE REHABILITATION, AND POOL CONSTRUCTION.**

**WE NOW BRING THAT SAME PATENTED TECHNOLOGY AND COMMITMENT TO THE (SFRM) SPRAYED FIRE RESISTIVE MATERIAL, AND (EIFS) EXTERIOR INSULATION AND FINISH SYSTEMS INDUSTRIES.**

## **SprayMate-50**



**SprayMate 50**

### ***The Complete Solution for all Mixing and Pumping Jobs***

#### ***Engine***

Deutz 30hp industrial rated diesel engine equipped with electric start and safety system shut down.

**Contact Strong Manufacturing for other engine options**

#### ***Mixer***

Patented Contra-blend design, 5 cubic foot capacity, twin ribbon paddles with wiper blades, packing type seal chambers and support bearings on all shafts. Body constructed of twin, interconnected, horizontal drums. Mixer empties without tilting.

*Options include*, Adjustable packing with outboard bearings. Rubber or UHMW lining.

#### ***Water System***

15 gallon Water Storage Tank with automatic fill valve, Manual discharge valve.

*Options include*, Hydraulic or PTO powered Water Pump, Digital Water Meter with manual reset.

#### ***Material Pump***

#60 Progressive Cavity Pump, Chrome Rotor, Natural Rubber Stator, 5 cubic ft. Wet Material Blender, Variable Output 0-7 gpm with pressures up to 350 PSI

*Options include*, Carbide Coated Rotor, UHMW liner for hopper, Material Hose Pressure Gauge

#### ***Hydraulic System***

Variable displacement pressure compensated hydraulic pump variable speed directional control valves, 30 Gallon Hydraulic Oil Reservoir.

#### ***Air System***

Air Compressor capable of producing up to 15 cfm @125psi

#### ***Frame***

Made of Tubular Steel, 4 Caster Wheels-2 Pivoting, 12" Tires

#### ***Dimensions***

Length: 11'-4" ♦ Width: 4' ♦ Height: 70" ♦ Weight: 2300lbs



**STRONG MFG. CO. FOLLOWS THE POLICY OF CONTINUOUS ADVANCEMENT IN PRODUCT DEVELOPMENT. FOR THIS REASON SPECIFICATIONS AND DIMENSIONS ARE FOR REFERENCE ONLY AND MAY BE CHANGED WITHOUT NOTICE**

**P.O. BOX 8068 ♦ PINE BLUFF, AR 71611  
PHONE 1-800-238-5042 ♦ (870) 535-4753  
FAX (870) 535-4843**

**[www.strongmfg.com](http://www.strongmfg.com)**

**E-MAIL [sales@strongmfg.com](mailto:sales@strongmfg.com)**